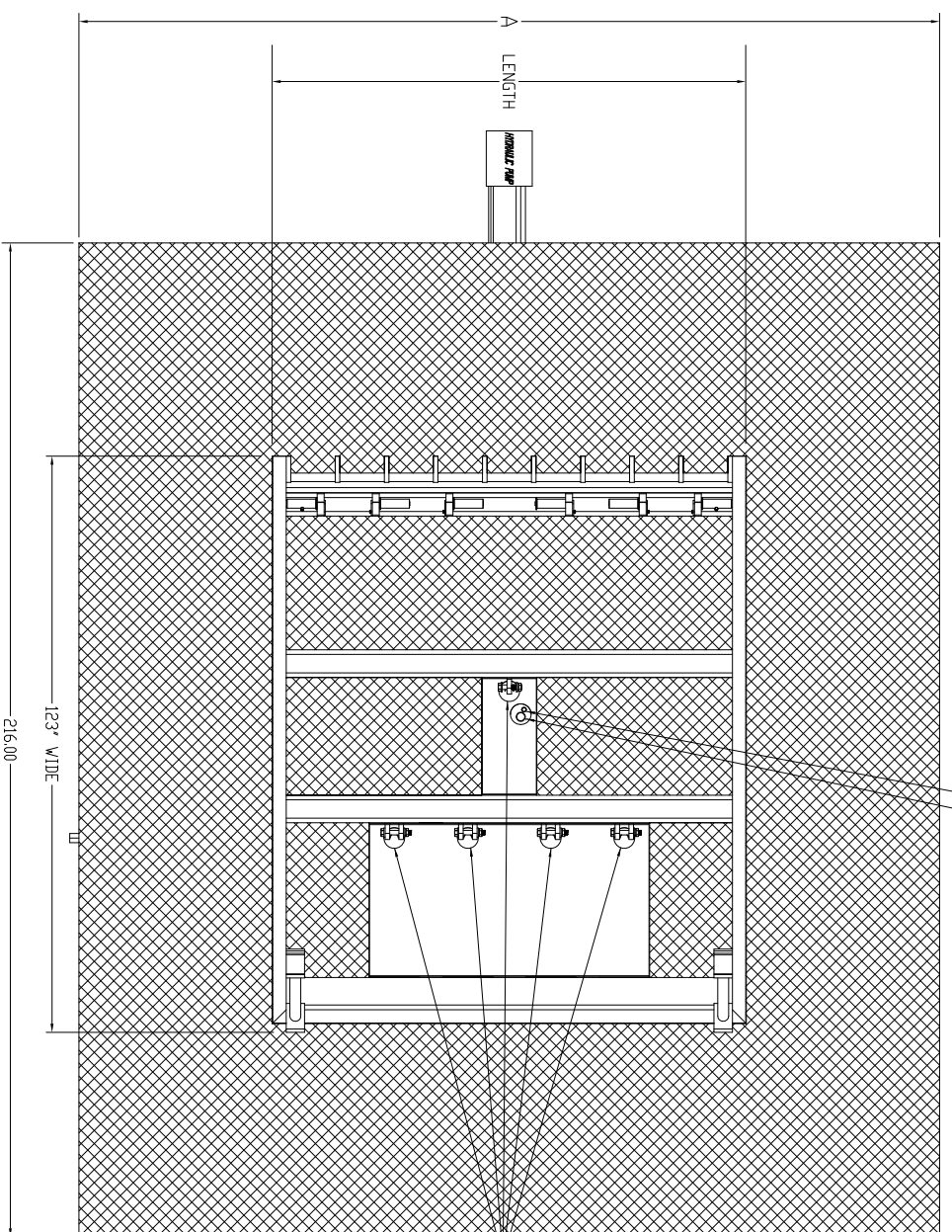


3/4" ELECTRICAL CONDUIT TO HYDRAULIC PUMP  
(THRU 4.5" DIA ACCESS)  
OPTIONAL EXTRA 3/4" ELECTRICAL CONDUIT  
TO HYDRAULIC PUMP FOR HEATER

3" CONDUIT TO HYDRAULIC PUMP (THRU 4.5" DIA ACCESS)



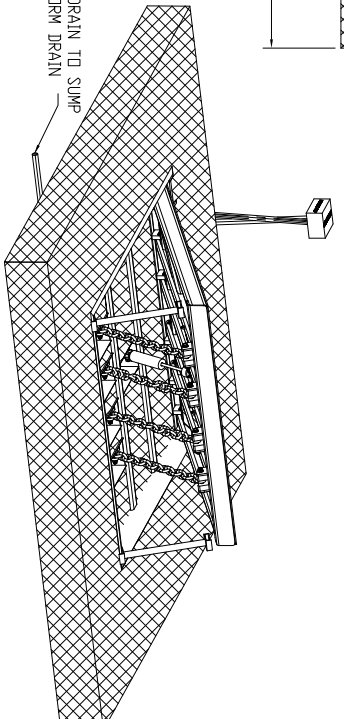
DOOR STRUCTURE, CYLINDER, AND CHAIN NOT SHOWN FOR CLARITY IN THIS VIEW

3" HYDRAULIC CONDUIT

3/4" ELECTRICAL CONDUIT

16.00

POSITIVE DRAIN TO SUMP  
PIT OR STORM DRAIN



5x INSERT 2" (MIN) PVC DRAIN FLANGE TO  
POSITIVE DRAIN, EACH PAN

NOTE: 4.5" DIA DRAIN HOLES, REDUCERS MAY  
BE REQUIRED FOR CONNECTION

BARrier SIZE	LENGTH	WIDTH	A
SW12-8 FT	103.50"	123.00"	12 FT
SW12-9 FT	115.50"	123.00"	12 FT
SW12-10 FT	127.50"	123.00"	14 FT
SW12-11 FT	139.50"	123.00"	14 FT
SW12-12 FT	151.50"	123.00"	14 FT
SW12-13 FT	163.50"	123.00"	15 FT
SW12-14 FT	175.50"	123.00"	16 FT

NOTES:

1. ALL CUT OR MACHINED SURFACES, UNLESS OTHERWISE SPECIFIED.
2. REMOVE ALL SHARP EDGES AND CORNERS.
3. INTERPRET THIS DRAWING PER ASME Y14.5M, 1994.
4. #4 REBAR ON 12" CENTERS IN BOTH DIRECTIONS, TWO LAYERS EVENLY SPACED TOP TO BOTTOM. ATTACH REBAR TO BARRIER FRAME ALL THREAD.
5. ALL HATCHED AREAS REPRESENT 3000PSI CONCRETE. ENSURE NO CONCRETE SPILLS INTO PAN OR PIN AREAS.

THIS IS A GENERIC DRAWING WITH TYPICAL DIMENSIONS AND IS NOT JOB SPECIFIC  
NOT TO BE USED FOR INSTALLATION

NOTE: 4.5" DIA DRAIN PIPE (MINIMUM)  
MAY BE REQUIRED FOR CONNECTION

<b>APSG</b> AMERICAN PUMP & SYSTEM GROUP 1700 W. 10TH STREET, NC, 27560 TEL: 919.486.1000 FAX: 919.486.1001 WWW.APSG.COM		PROJECT NO.: DATE: DRAWN BY: CHECKED BY: TITLE:	
THE DESIGNER, CONTRACTOR, ARCHITECT, ENGINEER, OR OTHER PROFESSIONAL PERSON SHALL BE RESPONSIBLE FOR THE ACCURACY OF THE DIMENSIONS AND FOR THE PROPER INTERPRETATION OF THIS DRAWING. THE CONTRACTOR SHALL BE RESPONSIBLE FOR THE PROPER INSTALLATION OF THE PRODUCT.		MODEL: DATE: REV:	